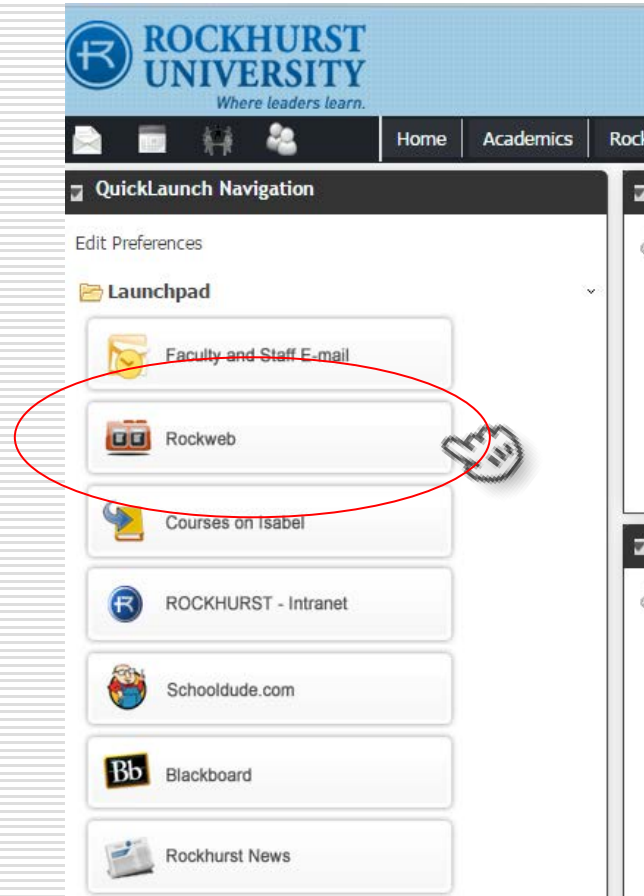




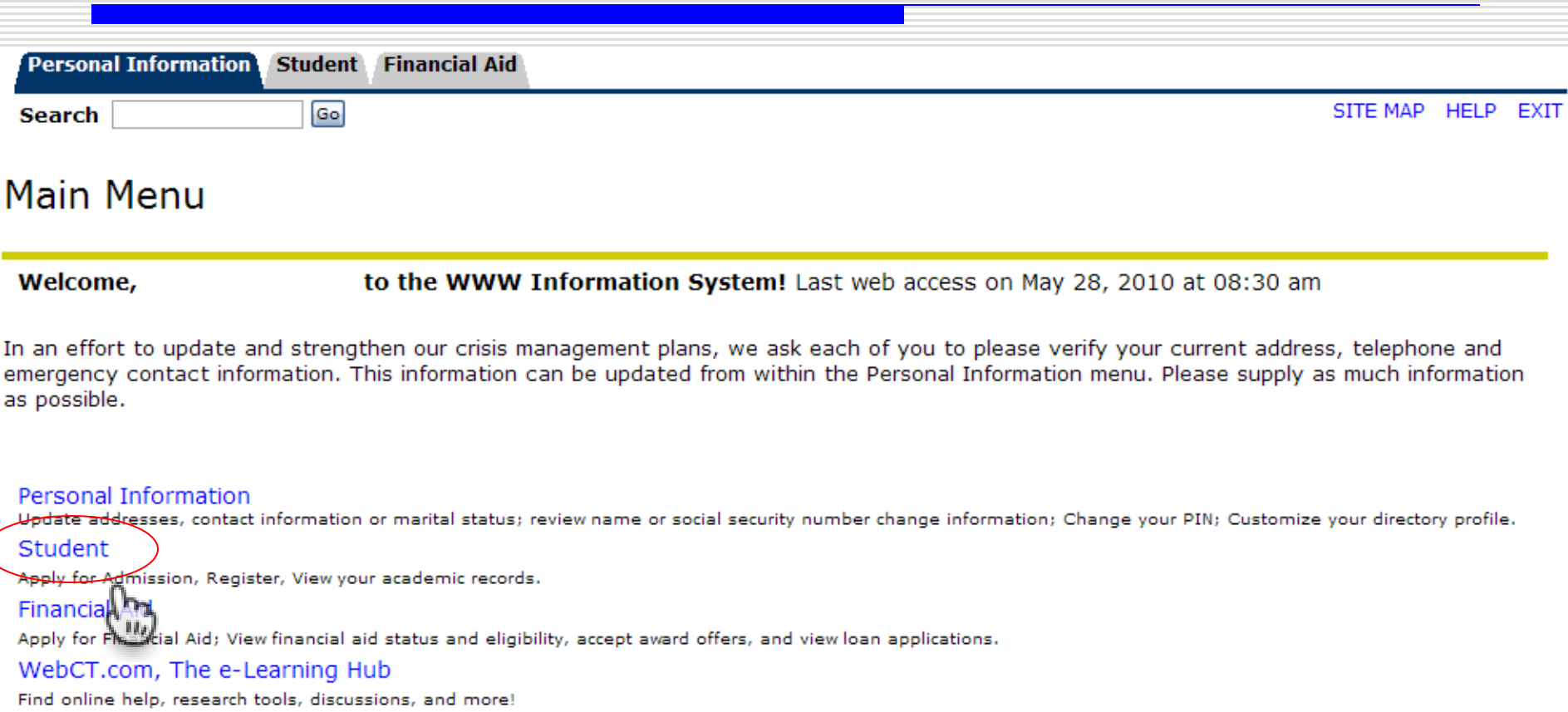
ROCKHURST UNIVERSITY
LEARNING, LEADERSHIP AND SERVICE IN THE JESUIT TRADITION

How to View Midterm/Final Grades

Access Rockweb from the [Campus Portal](#).



Access the Student options from the Main Menu.



The screenshot shows the top navigation bar with three tabs: 'Personal Information' (dark blue), 'Student' (light blue), and 'Financial Aid' (grey). Below the tabs is a search bar with a 'Go' button and links for 'SITE MAP', 'HELP', and 'EXIT'. The main heading is 'Main Menu'. A yellow horizontal line separates the header from the main content. The main content includes a welcome message, a paragraph about updating contact information, and three menu items: 'Personal Information', 'Student', and 'Financial Aid'. The 'Student' link is circled in red, and a mouse cursor is pointing at it. Below the menu items is a link to 'WebCT.com, The e-Learning Hub'.

[Personal Information](#) [Student](#) [Financial Aid](#)

Search [SITE MAP](#) [HELP](#) [EXIT](#)

Main Menu

Welcome, **to the WWW Information System!** Last web access on May 28, 2010 at 08:30 am

In an effort to update and strengthen our crisis management plans, we ask each of you to please verify your current address, telephone and emergency contact information. This information can be updated from within the Personal Information menu. Please supply as much information as possible.

[Personal Information](#)
Update addresses, contact information or marital status; review name or social security number change information; Change your PIN; Customize your directory profile.

[Student](#)
Apply for Admission, Register, View your academic records.

[Financial Aid](#)
Apply for Financial Aid; View financial aid status and eligibility, accept award offers, and view loan applications.


[WebCT.com, The e-Learning Hub](#)
Find online help, research tools, discussions, and more!

Go to Student Records.

Personal Information **Student** **Financial Aid**

Search [RETURN TO MENU](#) [SITE MAP](#)

Student

 **To make a payment on your student account by credit card or electronic check, please click this link: [Pay On-Line](#)**

[Admissions](#)
File an application for admissions; Review existing applications, their status, and the status of supporting requirements.

[Registration](#)
Check your registration status; Display your class schedule; Register for classes; Link to Barnes & Noble book orders.

[Student Records](#)
View your holds; Display your grades and transcripts.

[Student Account](#)
View your account summaries; statement/payment history and tax information

Select Midterm or Final Grades to view.

Personal Information **Student** Financial Aid

Search

Student Records

[View Holds](#)

[Midterm Grades](#)

[Final Grades](#)

[Grade Detail](#)

[Academic Transcript](#)

[Request Academic Transcript](#)

[View Status of Transcript Requests](#)

[Course Catalog](#)

[View Student Information](#)

[Class Schedule](#)

RELEASE: 7.5.1

After choosing an option you will have to Select the term for the grades you want to view. Click submit.

Personal Information

Student

Financial Aid

Search

Go

Select Term

Select a Term:

Fall 2010 Accel Nursing

Fall 2010 Accel Nursing

Fall 2010

Summer II 2010

Summer I 2010 Accel Nursing (View only)

Summer I 2010 (View only)

Spring 2010 Accel Nursing (View only)

Spring 2010 (View only)

Fall 2009 (View only)

Summer II 2009 (View only)

Summer 2009 Accel Nursing (View only)

Summer I 2009 (View only)

Spring 2009 Accel Nursing (View only)

Spring 2009 (View only)

Submit

RELEASE: 7.2